

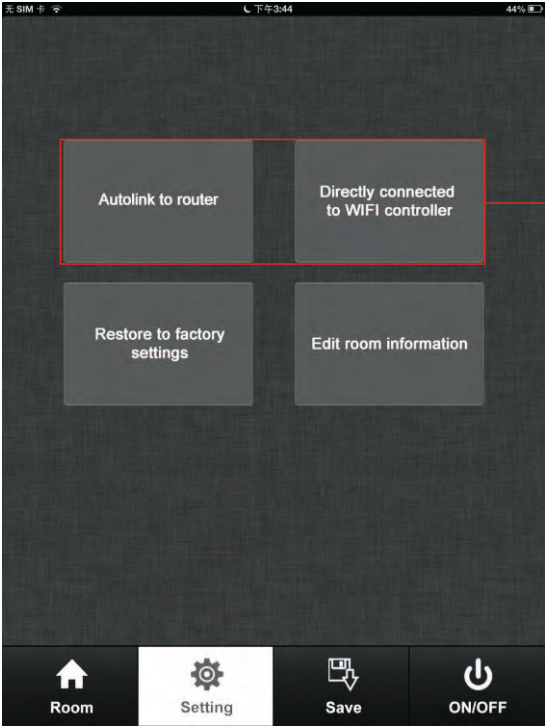


Configure

There are two different ways to configure smart phone connect to convertor:

- 1.Autolink to router
- 2.Directly connected to WIFI controller

We just need choose any one according different situation.



Two different ways to configure smart phone connect to convertor:
1.Autolink to router
2.Directly connected to WIFI controller

P1

Autolink to router

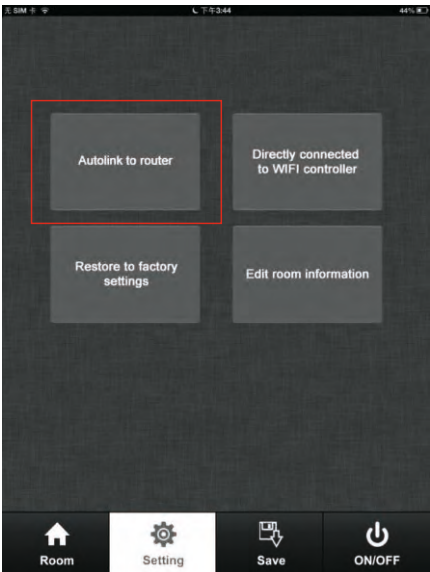
Most popular way when need to control LED lighting by own house's WIFI.

1)Search and connect the EASYCOLOR (WIFI controller default password 0123456789)

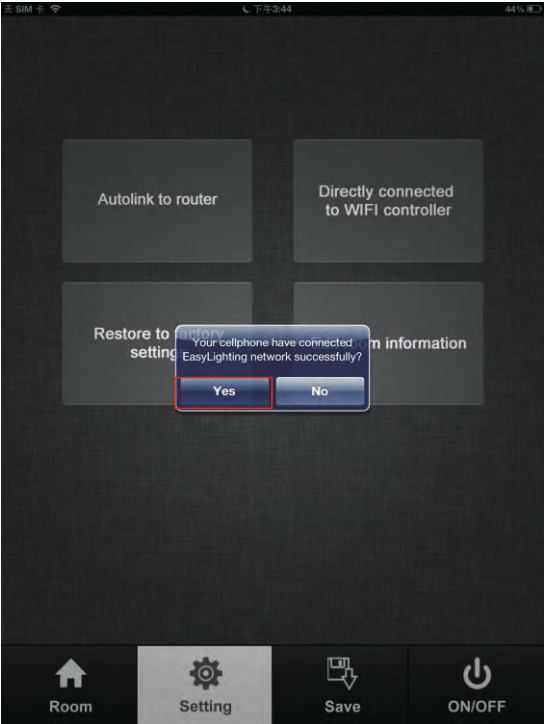
2)Enter easylighting application

3)Short press setting button  (P2)

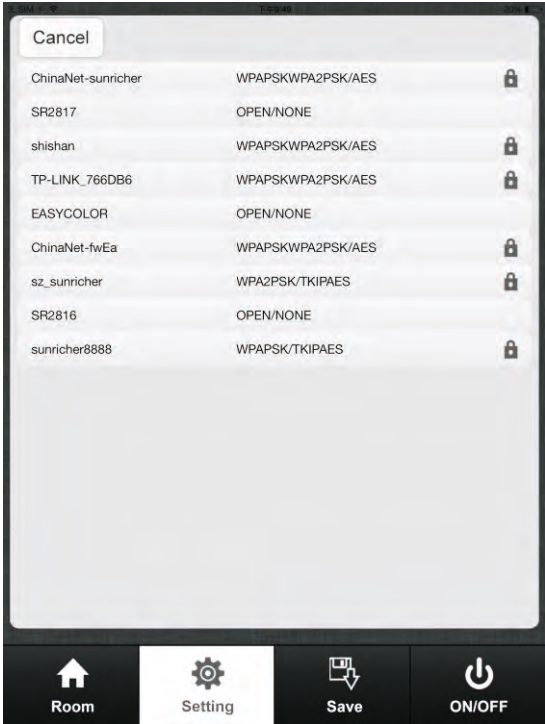
4)Short press Autolink to router  (P3)



5)Press yes , it will search all the router around automatically (P4.P5)



P4

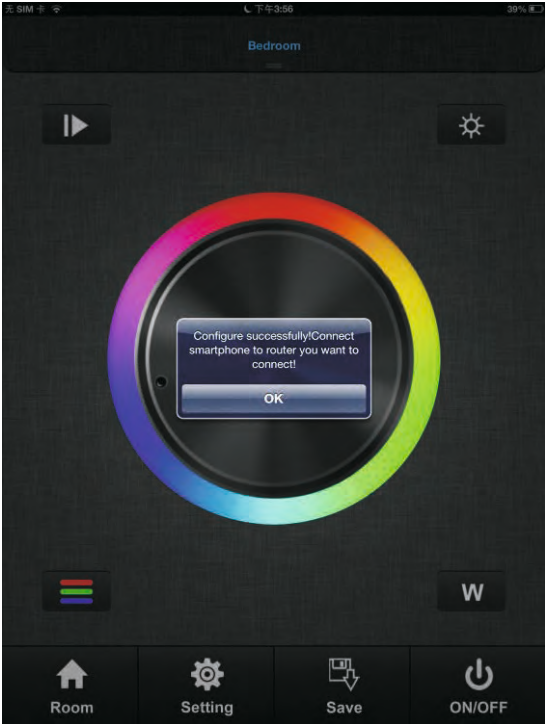


P5

6)Choose router we want connect
7)Enter password and then press OK (P6.P7)



P6



P7


Directly connect to WIFI controller

Be used without house's wifi

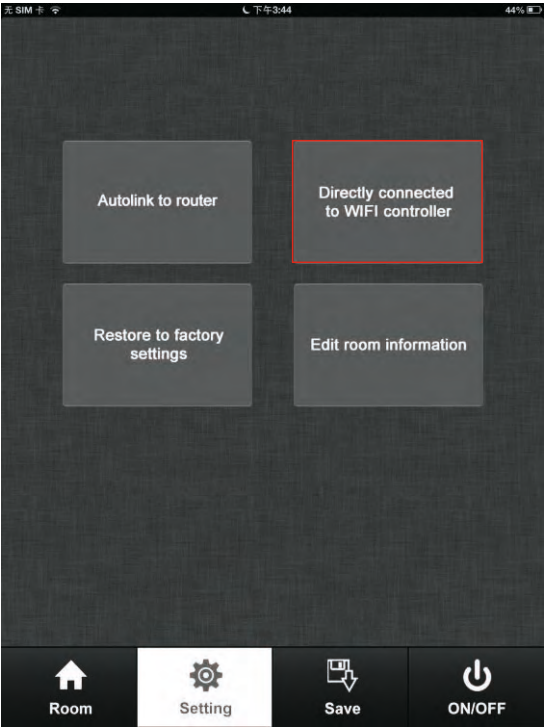
1)Search and connect the EASYCOLOR (WIFI controller default password 0123456789)

2)Enter easy lighting application

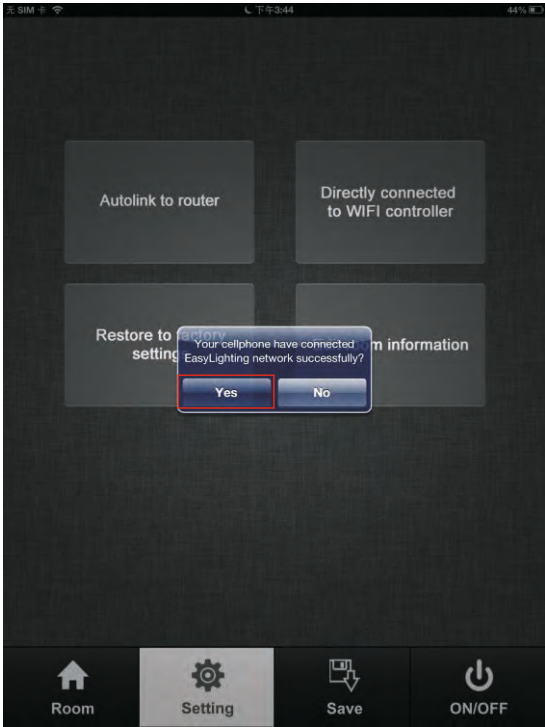
3)Short press setting button  .

4)Press  (P8)

5)Press yes  (P9).



P8

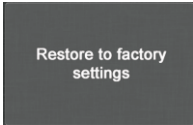


P9

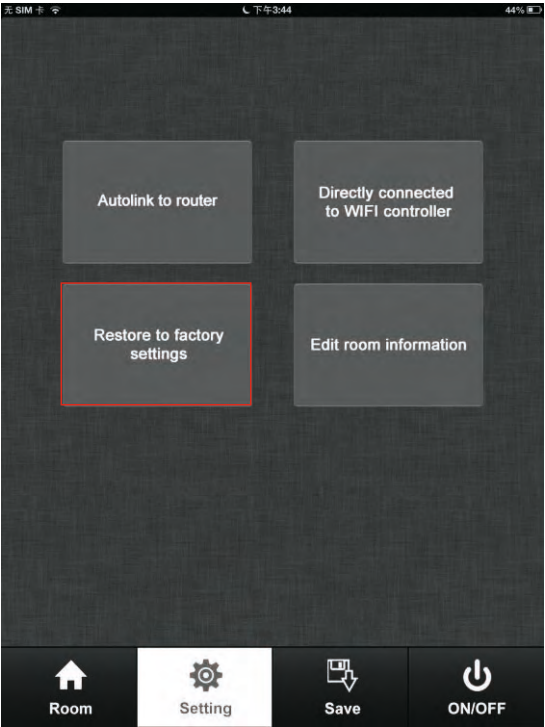
Restore to factory setting

When we control WIFI by exist network, the mold of WIFI controller was changed. Easylighting cannot be search in network list unless we reset the router. Then we can use this button to restore the WIFI controller to factory setting. (This function only is use when using exist WIFI network).

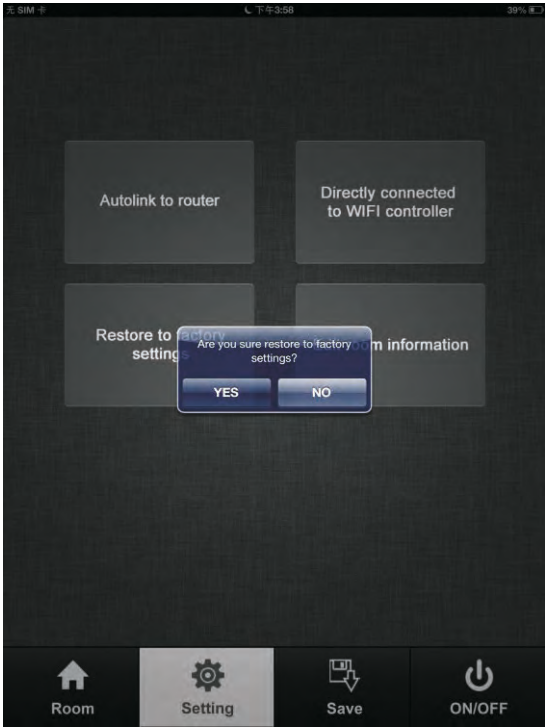
- 1)Connect exist WIFI and make sure WIFI controller already be configure to this network
- 2)Enter the setting interface
- 3)Short press Restore to factory setting .(P10)



- 3)Press yes; it will indicate successful restore factory setting.(P11)

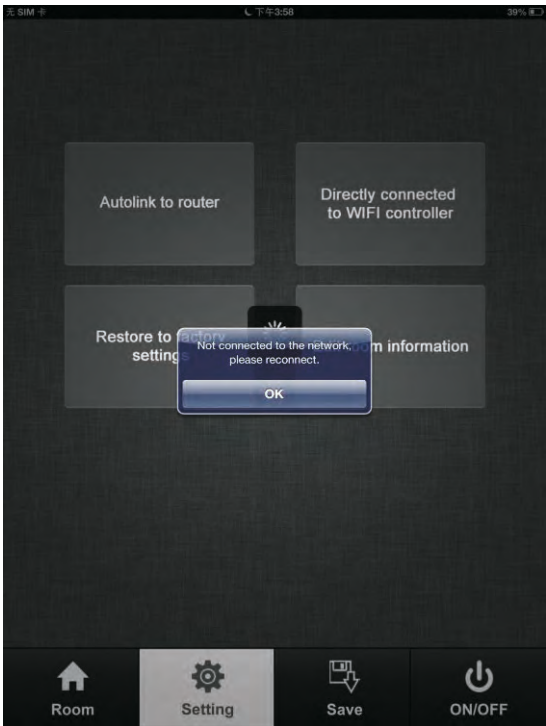


P10



P11

- 3)Press ok, after around 1 minute, Easylighting will can be found in network list again.(P12.P13)



P12